

MILSMITH

116 East 27th Street, 3rd Floor | New York, NY 10016 | 646-705-1060

FEATURED:

432 Park Avenue South



16th Floor at 432 Park Ave South

Details:

- 9800.00SFT
- 16th Floor (Top Floor)
- South East Exposure—Flooded with Light
- *Flexible terms*
- Flexible pricing
- Plug and play opportunity with immediate possession
 - Furnished, wired, ready
- Best priced sublease on park ave south

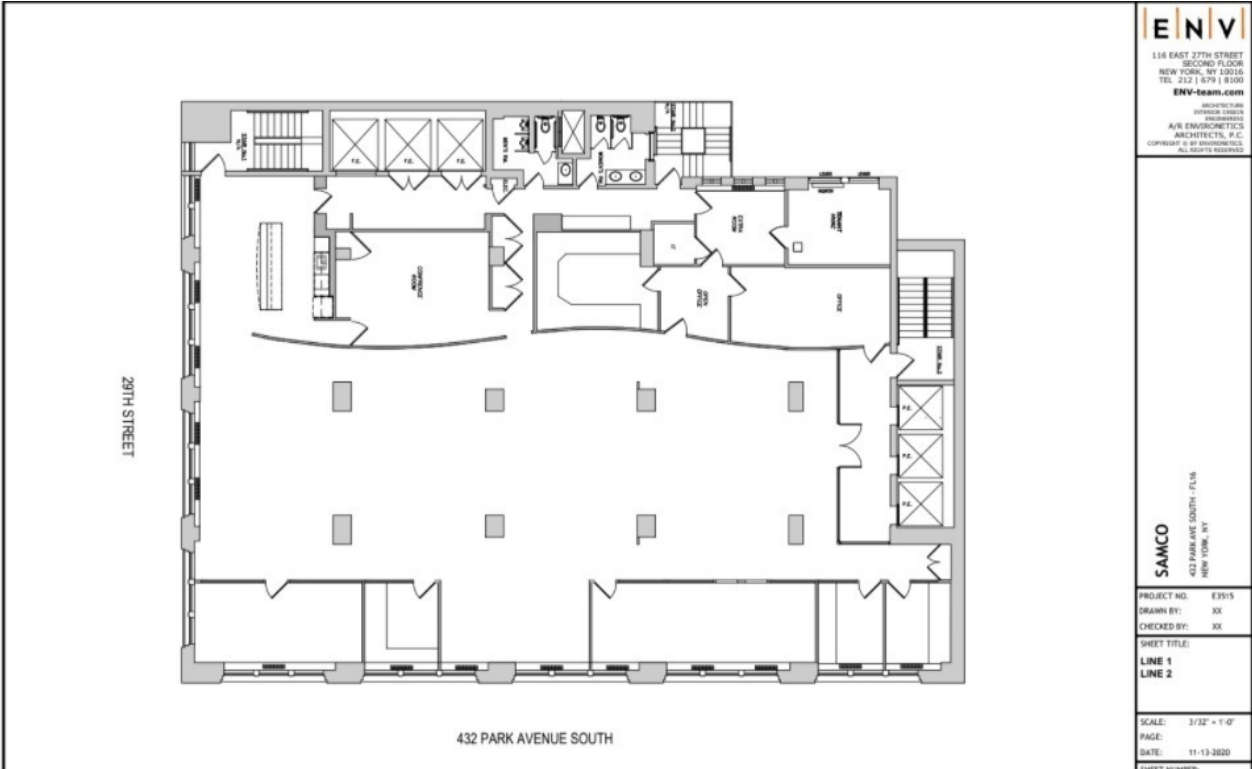
Amenities:

- Attended Lobby
- One block from 28th Street 6 Train stop
- Tenant Controlled HVAC
- Private Bathrooms
- 12' Ceilings
- Spectrum Fiber, Cogent Fiber, Cogent, Verizon Copper

Location:

West Side of Park Ave South
between E 29th St & E 30th St

FLOOR PLAN: SIXTEENTH FLOOR - 9,800 SFT



AS BUILT ABOVE

FLOOR PLAN: SIXTEENTH FLOOR - Existing Images



FLOOR PLAN: SIXTEENTH FLOOR - Existing Images



FLOOR PLAN: SIXTEENTH FLOOR - Existing Images



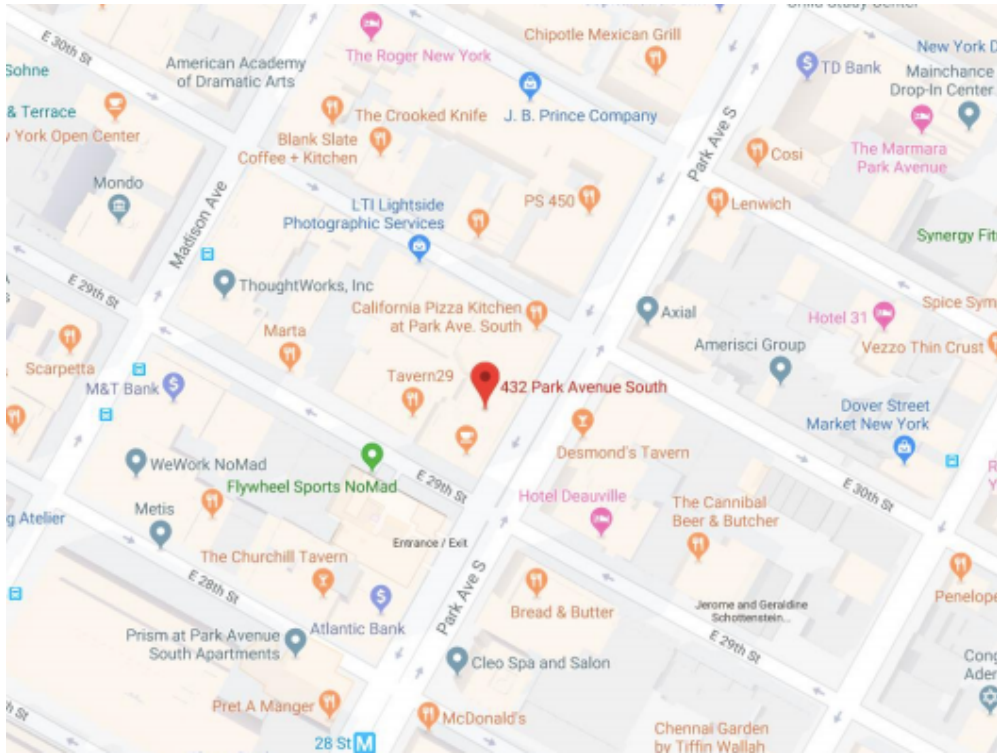
FLOOR PLAN: SIXTEENTH FLOOR - Existing Images



FLOOR PLAN: SIXTEENTH FLOOR - Existing Images



FEATURED: 432 PARK AVENUE SOUTH



For more information of general inquiries contact:

646-705-1060 (Joshua)

jsmith@milsmith.com

765-376-9467 (Matt)

matthew@milsmith.com